



2015 Fort St. John, British Columbia

Investment Ready Community Profile

NORTHERN BC BUSINESS ADVANTAGE

Northern British Columbia is a strategically located, resource-rich economy with many competitive advantages and incentives for business.



British Columbia has one of the most attractive investment climates for business in North America.

Manufacturers, for example, enjoy benefits such as:

- **Strong economic fundamentals** and market opportunities associated with major, long-term projects
- **Low Tax Rates** (personal and corporate) that rank BC among the lowest in Canada – complemented by sales tax exemptions on machinery and tax credits for research and development expenditures
- **Competitive Operating Costs** including low cost electricity relative to elsewhere in Canada or the US
- **Competitive Wage Rates** reflecting a balanced and growing labour pool
- **Growing Labour Supply** with government initiatives that are driving labour mobility into BC and training our existing workforce assets
- **Welcoming Communities** that keenly encourage new manufacturing and service investments
- **Financial Incentives** for capital investments and job creation in northern BC (up to \$5,000 per new job). *Contact Northern Development Initiative Trust.*

Welcome to Fort St. John

Fort St. John, BC's Energy Capital, is a dynamic and growing community in the heart of the Peace country. Known locally as the "Energetic City" it is a community that is home to some 20,000 residents working in one of the resource industries or service enterprises that give this community its culture.

Quality of life is essential for the community and our recreational facilities are second to none. The Pomeroy Sport Centre opened in 2010 and boasts an Olympic sized speed skating oval; indoor walking/running track; and two NHL sized hockey rinks. Made for participation, this facility sees over 60,000 visits each month in the winter season! Laughter and splashing can be heard daily at the indoor pool and wave pool complete with a water slide and toddler area. Over 25 km of trails weave their way throughout the city and along with our many parks and green spaces are host to many sport and health enthusiasts. New developments are required to connect their subdivisions to the trails to continue to expand on creating a safe and healthy community.

Fort St. John is also known for its music and culture. Proclaimed the 'Music Capital of the North' in 2009, the diversity of music and events can only be called remarkable. From concerts in the parks and local establishments to open mic nights and the unique "music that moves you" series on our transit system, our musicians and artists are bound to impress you.

You'll come here to work and you will stay here to live.

Warmest Regards,

Lori Ackerman
Mayor, City of Fort St. John
Fort St. John City Hall
Tel: 250.787.8150
Email: lackerman@fortstjohn.ca



CONTENTS

1. Demographics	6
Population	6
Household Income	7
Household Total Income 2011 - Distribution	8
Workforce Education Attainment	8
2. Labour Force	10
Employment by Industry	10
Major Employers	11
Labour Force	11
Employment Rate	11
Employment data – Northeast bc	12
Labour Participation Rate	12
	12
3. Payroll Costs.....	13
Workers Compensation – 2015	13
Employment Insurance – 2015	13
Social Insurance (Canada Pension Plan) – 2015	14
4. Higher Education	15
Four Year Institutions	15
Training Services	16
5. Transportation	17
Major Transportation Routes	17
The North Peace is Well Connected!	18
Highways	19
Northern Corridor Specifications	20
Highway Distances	22
Railroads	22
Airports	23
Ports	25
Port Shipping Distances	28
6. Industrial & Commercial Land Use.....	29
Land Zoned and Designated in Official Community Plan	29
Vacant Land Zoned and Designated in Official Community Plan	29
Local Permit Approvals	30
7. Utilities	31

Water System	31
Waste Water System	32
Landfill and Waste Management	32
Licensed Hazardous Materials Disposal	32
Electric Power	33
Natural Gas	35
Telecommunications	36
8. Business Support Services	37
9. Government	38
Municipal Government	38
Regional District	38
Provincial	38
Provincial Government Representation	39
Federal Government Representation	39
Senate of Canada	39
10. Housing	40
Housing Characteristics	40
Average Housing Values	40
11. Taxation	41
Corporate Income Tax	41
Personal Income Tax	41
Sales / Use Tax	41
Sales Tax Rate by Utility	42
Property Tax – Fort St. John	43
12. International Resources	44
Investment and Business Support Offices	44
Financial Institutions	45
Employment Assistance	45
13. Quality of Life	46
Climate	46
Culture	47
Health	50

1. DEMOGRAPHICS

POPULATION

FORT ST. JOHN & AREA

Population By Age Group	Population (2001)	Population (2006)	Population (2011)	Distribution % (2011)
0-14	3,710	5,465	3,940	21.0%
15-24	2,810	4,280	2,945	16.0%
25-44	5,755	8,325	6,670	36.0%
45-64	2,750	5,480	3,845	21.0%
65+	1,010	1,585	1,210	6.0%
Total:	16,034/23,007 ^A	25,136	18,610	100.0%
Median Age:	29.6	31.5	30.6	

^A Between the Census in 2001 & 2006 the Fort St. John Census Agglomeration boundary was changed. This accounts for the smaller 2001 population. The total of 23,007 is an adjusted count to reflect the 2006/ 2011 boundary.

Data Source: Statistics Canada – Data Source: Census Community Profile – <http://www12.statcan.gc.ca/census-recensement/index-eng.cfm?HPA>

PEACE RIVER REGIONAL DISTRICT

Population By Age Group	Population (2001)	Population (2006)	Population (2011)	Distribution % (2011)
0-14	13,160	12,790	12,615	21.0%
15-24	8,295	9,045	8,775	14.6%
25-44	17,490	16,935	17,310	28.8%
45-64	11,780	14,370	15,675	26.1%
65+	4,345	5,130	5,705	9.5%
Total:	55,070	58,270	60,080	100.0%
Median Age:	32.7	34.2	34.3	

Data Source: Census Community Profile – <http://www12.statcan.gc.ca/census-recensement/index-eng.cfm?HPA>

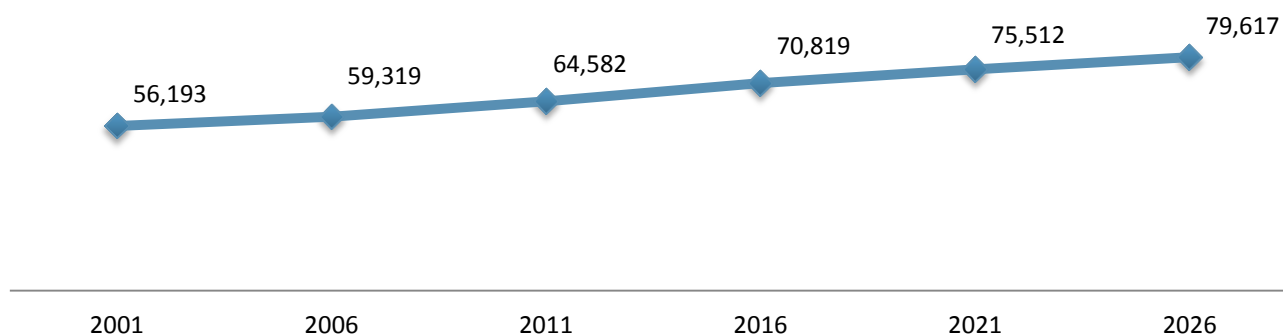
NORTHERN BC

Population By Age Group	Population (2001)	Population (2006)	Population (2011)	Distribution % (2011)
0-14	76,345	65,835	61,225	18.6%
15-24	49,160	46,175	43,750	13.3%
25-44	103,735	87,855	82,280	24.9%
45-64	83,765	95,340	100,935	30.6%
65+	29,225	34,905	41,790	12.7%
Total:	361,968	330,041	329,959	100.0%
Median Age:	35.0	39.5	42.2	

Data Source: 2001, 2006 and 2011 Census Community Profiles – <http://www12.statcan.gc.ca/census-recensement/index-eng.cfm?HPA>

"Northern BC" includes: Regional District of Bulkley Nechako, Cariboo Regional District, Central Coast Regional District, Fraser-Fort George Regional District, Kitimat-Stikine Regional District, Northern Rockies Regional Municipality, Peace River Regional District, Skeena-Queen Charlotte Regional District, Squamish-Lillooet Regional District Electoral Areas A and B, Stikine Region, and Thompson-Nicola Regional District Electoral Areas E and I.

POPULATION PROJECTION – PEACE RIVER REGIONAL DISTRICT



Data Source: BC Stats - <http://www.bcstats.gov.bc.ca/StatisticsBySubject/Demography/PopulationProjections.aspx>

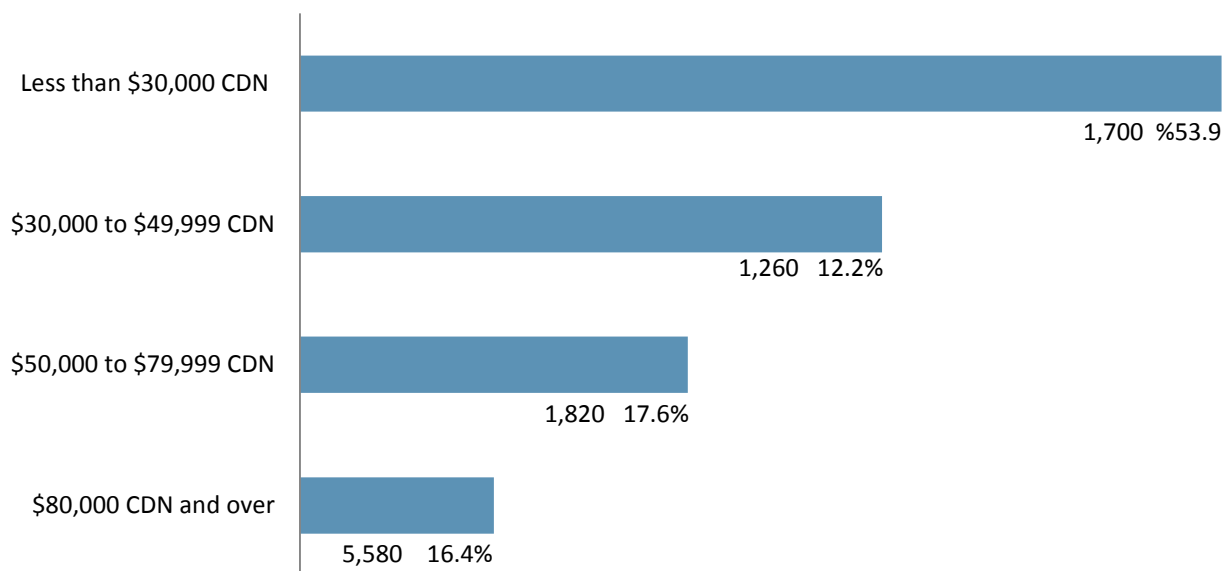
HOUSEHOLD INCOME

Household Income	2000	2005	2010
Number of Households	6,155	9,710	10,360
Median Income – Private Households	\$55,155	\$71,185	\$85,450
Median After-tax Income – Private Households	n/a	\$61,380	\$73,997

Data Source: 2001 and 2006 Census Community Profile - <http://www12.statcan.gc.ca/census-recensement/index-eng.cfm?HPA>

Data Source: 2011 National Household Survey - <http://www12.statcan.gc.ca/nhs-enm/index-eng.cfm>

HOUSEHOLD TOTAL INCOME 2011 - DISTRIBUTION



Data Source: 2011 National House Survey: <http://www12.statcan.gc.ca/nhs-enm/index-eng.cfm>

WORKFORCE EDUCATION ATTAINMENT

Level of Education	No. Attained	Percent
Less than High School Diploma	5,180	25.0%
High School Diploma Only	6,190	30.0%
Apprenticeship/Trades Certificate/Diploma	3,100	15.0%
College, CEGEP or other non-university certificate/diploma	3,640	17.0%
College/University Certificate/Diploma	590	3.0%
University Bachelor's Degree	1,375	7.0%
University Graduate Degree/Certificate	560	3.0%

2011 National House Survey: <http://www12.statcan.gc.ca/nhs-enm/index-eng.cfm>

Language Knowledge

Languages Spoken	Citizens
English	16,365
German	340
French	215
Tagalog (Filipino)	150
Russian	65
Chinese	55
Spanish	60
Punjabi	60
Cree	40
Afrikaans	35
Dutch	35

**Over 33 other languages are considered a mother tongue for residents.*

Data Source: Stats Can – 2011 Census – “Mother Tongue”

<http://www12.statcan.gc.ca/census-recensement/2011/dp-pd/prof/index.cfm?Lang=E>



2. LABOUR FORCE

EMPLOYMENT BY INDUSTRY

FORT ST. JOHN

Sector (Industry)	Number	Percent
Agriculture, Forestry, Fishing & Hunting	430	2.7%
Mining, Quarrying & Oil and Gas	2,200	14.0%
Construction	1,800	11.4%
Manufacturing	645	4.1%
Transportation & Warehousing	1,105	6.9%
Arts, Entertainment & Recreation	1,110	7.1%
Wholesale Trade	585	3.7%
Retail Trade	1,835	11.6%
Services	3,950	25.0%
Finance, Insurance, Real Estate & Leasing	760	4.8%
Government	1,380	8.7%
Total	15,800	100.0%

NORTHERN BC

Sector (Industry)	Number	Percent
Agriculture, Forestry, Fishing & Hunting	12,329	7%
Mining, Quarrying & Oil and Gas	8,891	5%
Construction	14,409	8%
Manufacturing	15,394	9%
Transportation & Warehousing	10,787	6%
Utilities	1,182	1%
Wholesale Trade	4,704	3%
Retail Trade	19,343	11%
Services	64,315	38%
Finance, Insurance & Real Estate	6,316	4%
Government	12,972	8%
Total	170,642	100.0%

Data Source: Statistics Canada – National Household Survey 2011- Houston, Regional District Profile: Bulkley-Nechako, Cariboo, Central Coast, Fraser-Fort George, Kitimat-Stikine, Northern Rockies, Peace River, Skeena-Queen Charlotte, Squamish-Lillooet (Areas A & B), Thompson Nicola (Areas E&I) and Stikine <http://www12.statcan.gc.ca/nhs-enm/2011/dp-pd/index-eng.cfm>



MAJOR EMPLOYERS

Company	Product/Service	# of Employees	Website
Canadian Tire Association Store		75	www.canadiantire.ca
Canfor		174	www.canfor.com
CQ Energy Canada Resources Partnership		77	
Focus Surveys		100	www.focus.ca
Peace Valley OSB		101	www.pvosb.com
Northern Lights College		100	www.nlc.bc.ca
BC Oil and Gas Commission		100	www.bcogc.ca
Quality Inn Northern Grand		77	www.qualityinnnortherngrand.com
Shell Canada Ltd		300	www.shell.ca
Spectra Energy		151	www.spectraenergy.com
Troyer Ventures Ltd		100	www.troyer.ca
Walmart		151	www.walmart.ca

Data Source: City of Fort St. John - www.fortstjohn.ca

LABOUR FORCE

	2001	2006	2011
Total Population 15 and over	12,325	19,510	20,645
In Labour Force	10,285	15,710	16,015
Employed	8,640	15,010	15,070
Unemployed	1,645	695	950

Data Source: 2001 and 2006 Census Community Profiles – <http://www12.statcan.gc.ca/census-recensement/index-eng.cfm?HPA>
2011 National House Survey: <http://www12.statcan.gc.ca/nhs-enm/index-eng.cfm>

EMPLOYMENT RATE

	2001	2006	2011
Unemployment Rate	9.2%	4.4%	5.9%
Labour Participation	77.9%	80.5%	77.6%

Data Source: 2001 and 2006 Census Community Profiles – <http://www12.statcan.gc.ca/census-recensement/index-eng.cfm?HPA>
2011 National House Survey: <http://www12.statcan.gc.ca/nhs-enm/index-eng.cfm>

EMPLOYMENT DATA – NORTHEAST BC

*2015 Stats are as at July 2015

*Northeast BC's stats fluctuate during the Break Up/Seasonal Work months

	2010	2011	2012	2013	2014	2015 (as at July)
Employed ('000)	37.2	37.4	40.1	39.8	38.5	40.4
Unemployment Rate	6.8%	5.1%	4.1%	4.8%	4.9%	5.5%

Data Source: "BC Employment and Unemployment Rate by Region and Metropolitan Area" BC Stats - <http://www.bcstats.gov.bc.ca/StatisticsBySubject/LabourIncome/EmploymentUnemployment.aspx>

LABOUR PARTICIPATION RATE

Labour Participation Rate	2001	2006	2011
Male	86.6%	87.7%	85.0%
Female	68.6%	72.7%	69.6%

Data Source: 2001 and 2006 Census Community Profiles – <http://www12.statcan.gc.ca/census-recensement/index-eng.cfm?HPA>
2011 National House Survey: <http://www12.statcan.gc.ca/nhs-enm/index-eng.cfm>



3. PAYROLL COSTS

WORKERS COMPENSATION – 2015

		Notes
Average Cost of All Manufacturing Per \$100 Payroll	\$1.73 CDN	Rates set by employer's business activity. Applies up to maximum gross earnings of \$78,600 per year.
Average Rate for Office Workers Per \$100 Payroll	\$0.29 CDN	There is no separate rating for office occupations in BC- the applicable industry rating applies to all workers. Rates for Business Services range from \$0.10-\$0.79 per \$100 of payroll. Average of \$0.29.
Maximum Weekly Benefit (Net)	\$1032.44 CDN	Maximum per employee set at 90% of average net earnings (after deductions for income taxes, Canada Pension Plan & Employment Insurance), up to maximum wage of \$78,600 per year.

Data Source: WorkSafeBC – www.worksafebc.com

EMPLOYMENT INSURANCE – 2015

		Notes
Taxable Base		Based on gross payroll up to a gross per worker salary of \$49,500 per year.
Premium Rates		
▪ Employee Rate	\$1.88 per every \$100 of earning	Maximum annual contribution per worker is \$930.60.
▪ Maximum Weekly Benefits	\$524.00 CDN	

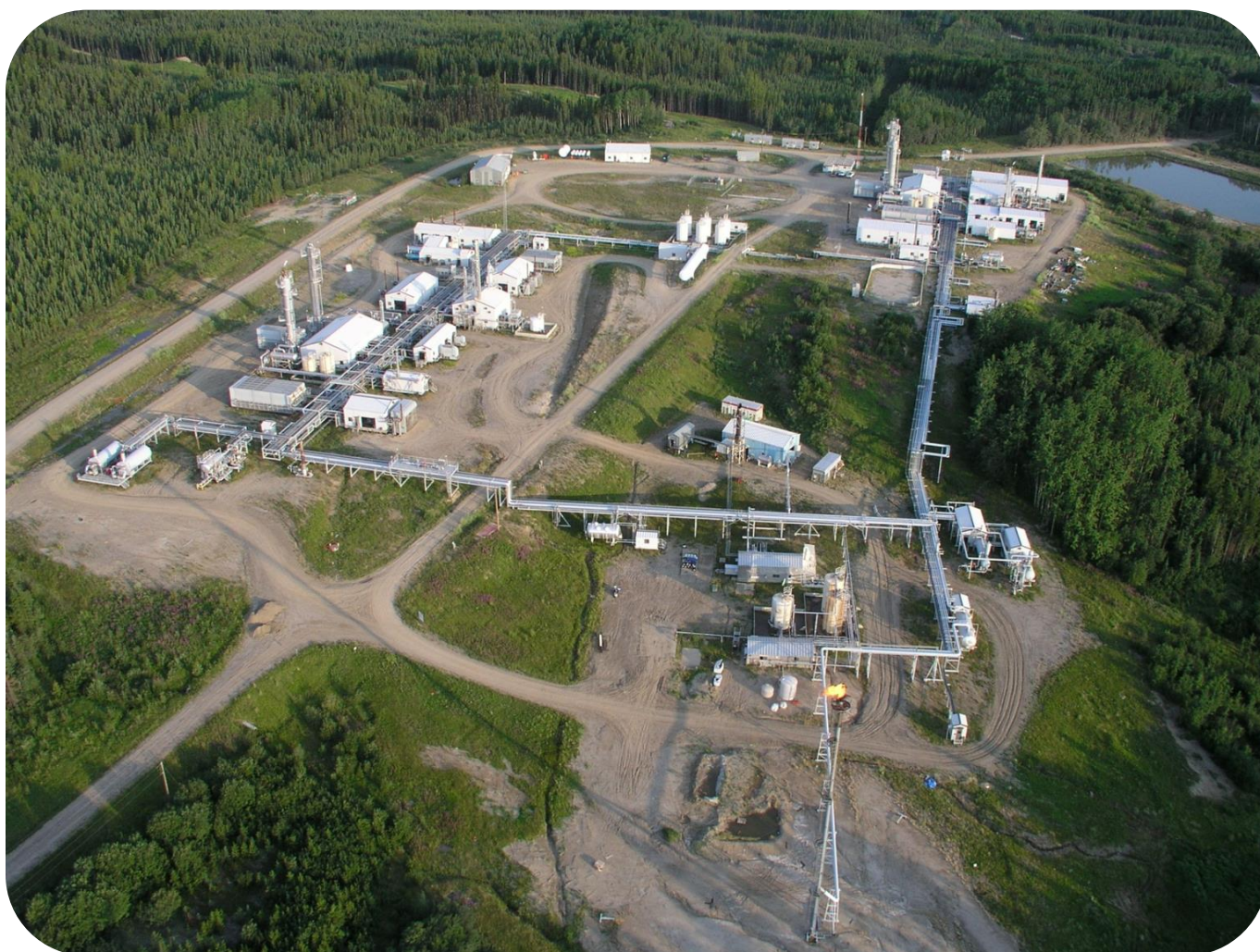
Data source: Service Canada – 2015 Premium Rates - <http://www.servicecanada.gc.ca/eng/ei/types/regular.shtml#what>



SOCIAL INSURANCE (CANADA PENSION PLAN) – 2015

		Notes
Taxable Base	Gross Payroll \$3,500 CDN	Based on annual gross salary up to \$53,600, basic exemption of \$3,500. Both employers and employees are required to contribute to the Canada Pension Plan.
Employee/Employer Contribution	4.95%	Employer premium equal to employee premium.
Maximum Annual Employer Contribution Per Employee	\$2458.39 CDN	Employer contribution matches employee contribution.
Rate	9.9%	
Maximum Annual Self Employed Contribution	\$4959.90 CDN	

Data Source: Service Canada – <http://www.servicecanada.gc.ca/eng/services/pensions/cpp/contributions/index.shtml>



4. HIGHER EDUCATION

FOUR YEAR INSTITUTIONS

Institution	University of Northern British Columbia
Campus/Address	UNBC Peace River-Liard Campus Box 1000, 9820 120 th Avenue Fort St John, BC V1J 6K1 Tel: 250.787.6220 Toll Free: 1.800.935.2270
Other Campuses	Prince George (Main), Gitwinksihlkw, Quesnel, Terrace
Website	www.unbc.ca
Driving Distance from Taylor	Fort St. John Campus – 20km Prince George Campus – 424km
Enrolment (2014/2015)	3,302 (All Campuses) 37 (Fort St. John Campus)
Where Students are From	Northern BC – 70.4% Southern BC – 14.4% Elsewhere – 15.2%

Data Source: University of Northern British Columbia - <http://unbc.ca/>

Institution	Northern Lights College
Campus/Address	Fort St. John Campus Box 1000, 9820 120 th Avenue Fort St John, BC V1J 6K1 Tel: 250.785.6981 Toll Free: 1.866.463.6652
Other Campuses	Dawson Creek (Main), Chetwynd, Fort Nelson, Tumbler Ridge
Website	www.nlc.bc.ca
Driving Distance from Taylor	Fort St. John Campus – 20km
Enrolment (2014/15)	1530 (All Campuses) 643 (Fort. St. John Campus)

Data Source: Northern Lights College – <http://nlc.bc.ca>

TRAINING SERVICES

Institution	Category	Website
Northern Lights College	Workforce Training & Continuing Education	http://www.nlc.bc.ca/Programs/Workforce-Training
Community Futures Peace Liard	Business Improvement	http://communityfutures.biz/
ENFORM	Industry/Workforce Training	http://www.enform.ca/
Mountainview Safety Services Inc.	Safety Training	http://mountainviewsafety.com/
Central Interior First Aid	First Aid Training	http://www.oildirectory.com/customer_sites/cifa/default.htm
St. John Ambulance	First Aid Training	http://www.sja.ca/English/Courses-and-Training/Pages/Course%20Descriptions/Workplace-Courses.aspx
Alpha Safety Ltd.	First Aid and Safety Training	http://www.alphasafety.net/
Echo Medical Safety and Training Services Inc.	First Aid and Safety Training	http://echomstinc.com/
J T Safety Training Ltd.	First Aid and Safety Training	http://www.jtsafetytraining.ca/
Trojan Safety Services	First Aid and Safety Training	http://www.trojansafety.com/

Data Source: City of Fort St. John - www.fortstjohn.ca



5. TRANSPORTATION

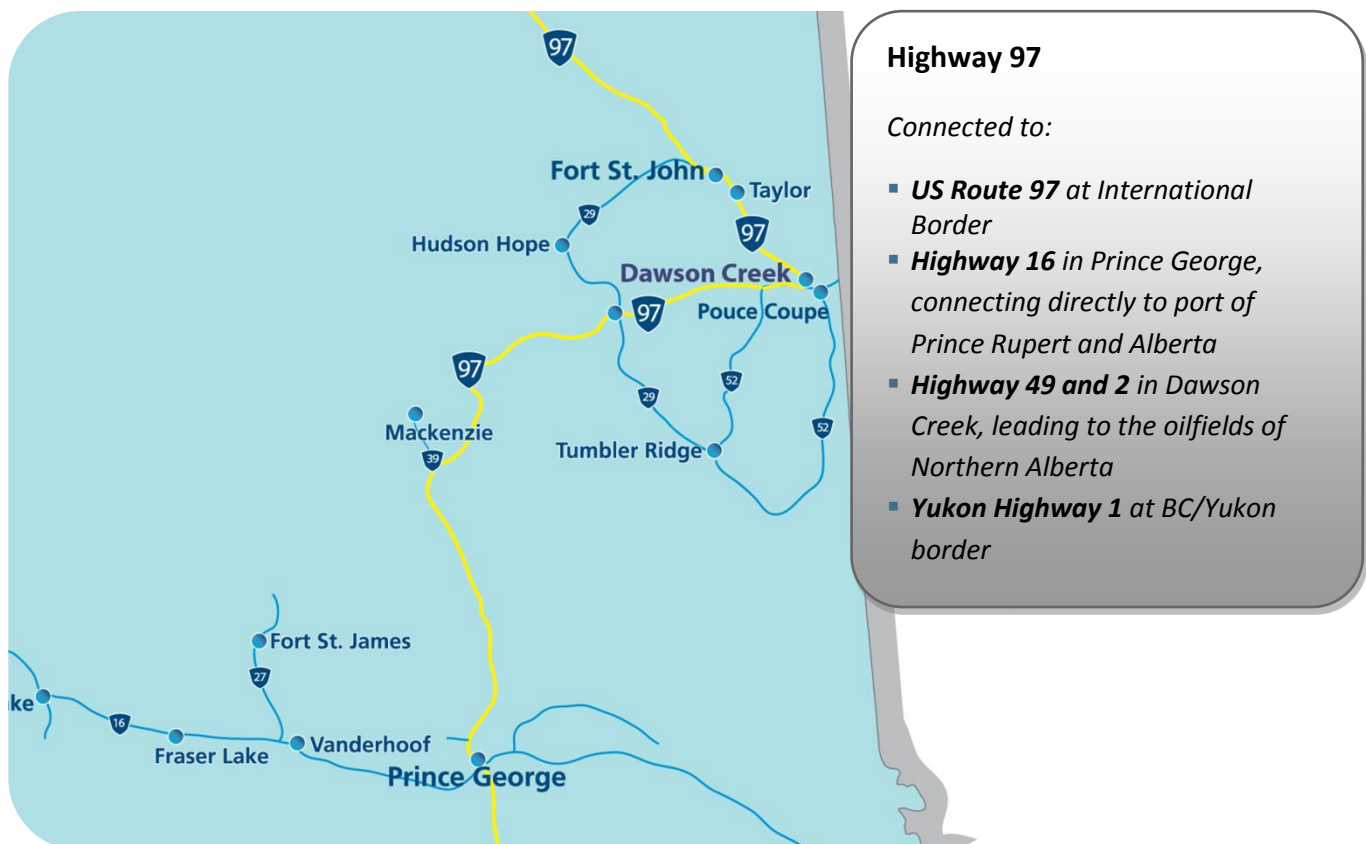
MAJOR TRANSPORTION ROUTES

HIGHWAY 97

BC Provincial Highway 97 provides a vital link for communities and resource throughout central and northern B.C. Highway 97 is part of the provincial highway system that stretches from the Canada/US border to the BC/Yukon border, Highway 97 being the longest single numbered route in the province. It is a major north/south route linking several major BC communities to local, national and international markets.

Highway 97 is known by several names, each one designated to one of four stretches of the highway. The northern sections of the highway include the Cariboo Highway from Cache Creek to Prince George, the John Hart Highway from Prince George to Dawson Creek and the Alaska Highway from Dawson Creek north where it terminates at the BC/Yukon border. The route takes its number from US Route 97, which it connects to at the US/Canada border and runs the length of the United States all the way to California.

Recent upgrades to Highway 97 have created new opportunities for northern BC businesses and industries which were previously hindered by the constraints on the highway that impeded the flow of commercial traffic. Upgrades to the Highway include expansions to four lanes in crucial areas and heightening of bridges and overpasses to meet the minimum standard of 5.0 meters. This allows the companies that are operating in the Northeast with quick and direct access to the rest of the province and its business activities. The improvements and upgrades continue each year with the growing economy of northern B.C.



NORTHERN CORRIDOR

The Northern Corridor spans over half of continental Canada and reaches well into the heartland of North America south of Chicago, USA. It travels through the lowest elevations of the Americas' great continental divide, also known as the "Yellow Head Pass," and forms the straightest, shortest, flattest route for Asian- North American trade. Three Northern British Columbia ports provide efficient access to this corridor: Kitimat, Stewart and Prince Rupert. Each port offers unique advantages and services that meet the needs of the region and international trade.

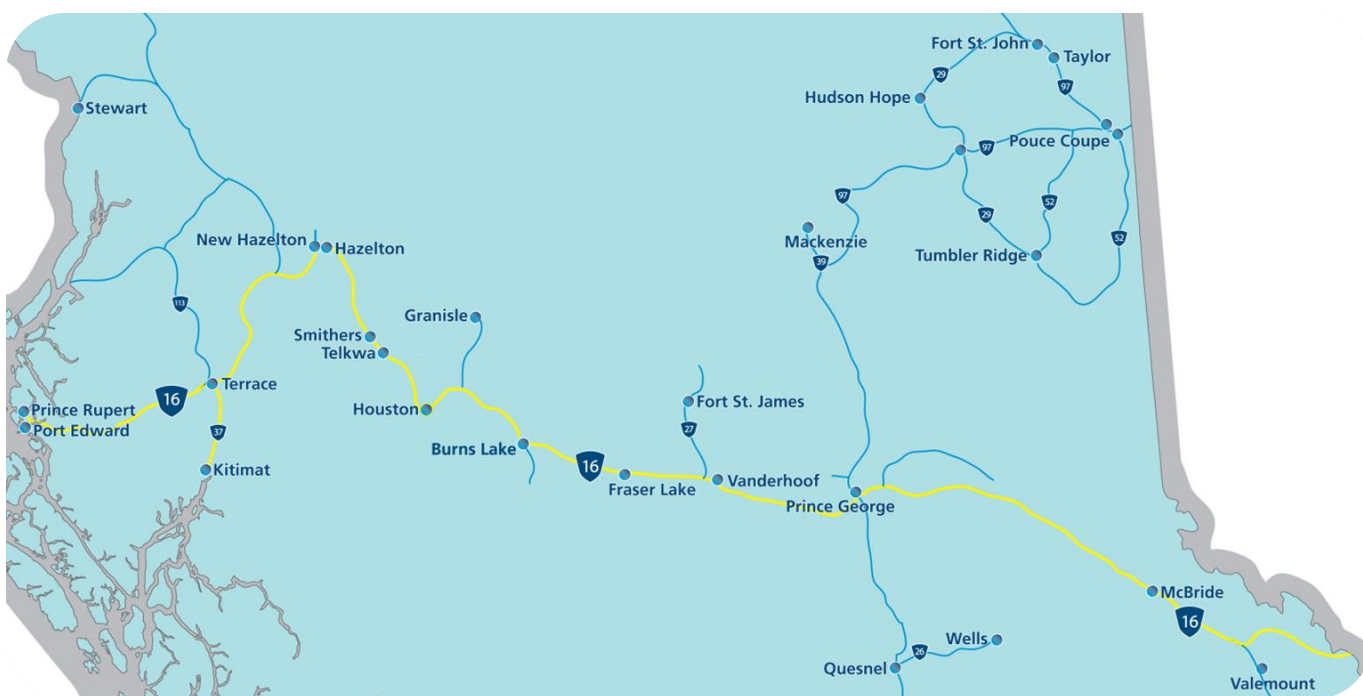
Trans-continental rail, TransCanada Highway and direct air service into international air hubs are in place. The corridor services business covered by the North American Free Trade Agreement, through a variety of break bulk and container services in ports operated by governments and those run by private port interests.

The Northern Corridor is less impeded by road closures, significant weather patterns and avalanches than the Southern Canadian corridor. It provides a "one less day" shipping advantage to or from Asia compared to all other North American Port locations including Vancouver and all USA Pacific ports.

Canadian National Rail (CN Rail) reaches well into the heartland of America with shipping agreements in place with major US rail carriers. CN has made significant investments in the Northern Corridor rail line including extended sidings, upgrades to signal systems, increased bridge and tunnel clearances. The corridor is serviced by five international airports and four northern airports with Prince George offering international services. The North Peace region is serviced by three commercial carriers with daily service to four international airports.

THE NORTH PEACE IS WELL CONNECTED!

Highway 97 runs along the Peace River, connecting the North Peace region to Highway 16 and the Northern Corridor. There are also rail lines that run in three directions from the North Peace hub, Fort St John, keeping the area well connected to the rest of the country.



NORTHERN CORRIDOR SPECIFICATIONS

Commercial Vehicle Without Permit	Specifications
Maximum Width	2.59 metres
Maximum Height	4.15 metres
Maximum Vehicle Weights	
▪ Super B	63,500 kilograms
▪ Single Axel	9,100 kilograms
▪ Tandem Axle (Set)	17,000 kilograms
▪ Tridem Axle (Set)	24,000 kilograms

Commercial Vehicle With Permit	Specifications
Maximum Width	4.4 metres
Maximum Height	4.72 metres
Maximum Vehicle Weights	
▪ Super B	64,000 kilograms
▪ Single Axel	9,100 kilograms
▪ Tandem Axle (Set)	23,000 kilograms
▪ Tridem Axle (Set)	29,000 kilograms

Data Source: CVSE - www.cvse.ca
 Overhead Clearances – extraordloads.dc@gov.bc.ca
 CV HEIGHT CLEARANCE TOOL WILL GIVE YOU UP TO DATE HEIGHTS - WWW.DRIVEBC.CA

OVERHEAD CLEARANCES

Highway 97 – Quesnel to Dawson Creek	Clearance
Quesnel to Prince George	
▪ Bellows CN Railway Overpass	4.96 metres
▪ Hixon CN Railway Overpass	4.90 metres
▪ Stoner CN Railway Overpass	4.70 metres
▪ Red Rock CN Railway Overpass	4.64 metres
Prince George to Mackenzie Junction	
▪ Salmon River Bridge	5.40 metres
▪ Parsnip River Bridge	5.05 metres
Mackenzie Junction to Chetwynd	
▪ Bijoux CN Railway Overpass	6.30 metres
▪ West Pine CN Railway Overpass	4.92 metres
Chetwynd to Dawson Creek	
▪ East Pine CN Railway Overpass	5.00 metres

Yellowhead Highway 16 - BC Border to Prince Rupert	Clearance
▪ Khyex River Bridge	5.95 metres
▪ Kitsequcla Overpass	5.7 metres
▪ Tete Jaune underpass	4.96 metres

Highway 37 from Highway 16 North to Yukon Border

- | | |
|--------------------------|-------------|
| ▪ Irving River Bridge #2 | 5.74 metres |
| ▪ Devil Creek Bridge | 5.74 metres |

Highway 37 from Highway 16 South to Kitimat

- | | |
|-------------------------|-------------|
| ▪ Williams Creek Bridge | 4.97 metres |
| ▪ Hirsch Creek Bridge | 4.72 metres |
| ▪ Kitimat River Bridge | 5.08 metres |

Highway 37A from Highway 37 To Stewart

- No Clearances
-

PROVINCIAL PERMIT CENTRE

For more information on receiving a commercial vehicle permit please contact **1-800-559-9688**. The core hours of service are from 5am to 10pm, seven days a week and most statutory holidays. The 1-800 number is available to callers anywhere in Canada or the United States. Permits available through this line include:

- | | |
|---|--|
| ▪ non-resident commercial vehicle permits | ▪ motor fuel tax permits |
| ▪ term oversize and overweight permits | ▪ highway crossing permits |
| ▪ single trip oversize and overweight permits | ▪ extra-provincial temporary operating permits |



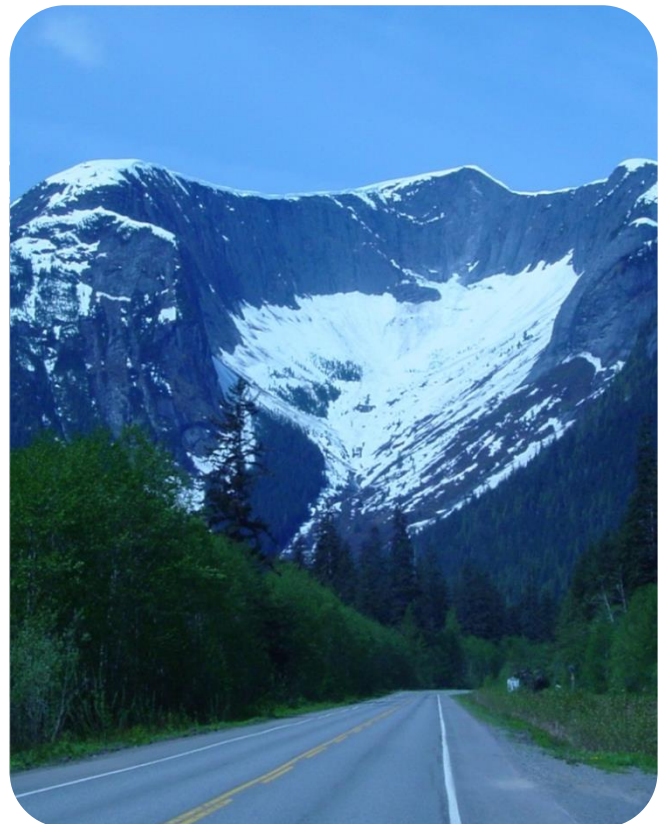
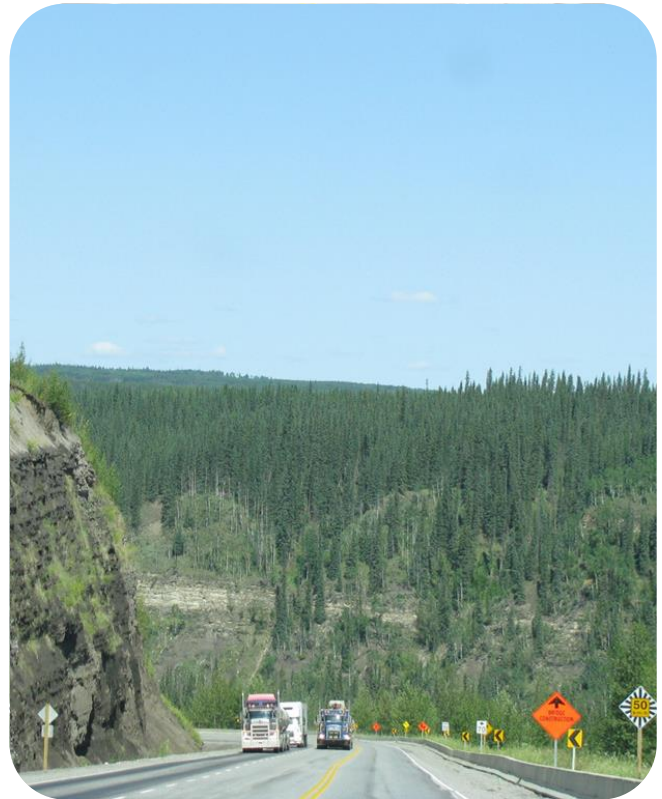
HIGHWAY DISTANCES

Metro Area	Distance
Terrace	1,011 kilometres
Prince George	437 kilometres
Kamloops	962 kilometres
Edmonton	663 kilometres
Vancouver	1,221 kilometres
Calgary	969 kilometres
Victoria	1,313 kilometres
Seattle	1,335 kilometres
Portland	1,613 kilometres

RAILROADS

CN Rail	www.cn.ca
Main or Branch Line:	Main
Shortline or National:	National and Shortline
Distance to Nearest Switching Yard:	In the community
Capabilities	Cargo – Bulk, Container, Liquid

VIA Rail	www.viarail.ca
Main or Branch Line:	Branch and Main
Shortline or National:	National and Shortline
Distance to Nearest Switching Yard:	436 kilometres (Prince George)
Capabilities	Passenger



AIRPORTS

North Peace Regional Airport	www.fsairport.com
Hub Status	Commercial
Distance from Fort St. John	9.2 kilometres
Hours of Operation	4:30am to 1:00am
Approved Capital Expansion	\$5.1 million - project designed to replace existing terminal building with a new terminal; \$6 million - runway construction
Customs Point of Entry	No
Foreign Trade Zone	No
Full Instrumentation	No
No. of Runways	2
Runway Length	2,105 metres; 2,042 metres
Carriers	Air Canada Jazz, Central Mountain Air, WestJet Encore
Weekly Non-Stop Flights (Average)	71/week
Flights to Largest Cities Served	
▪ Greater Vancouver	46/week
▪ Calgary	7/week
▪ Edmonton	5/week
▪ Fort Nelson	5/week

Prince George Airport	www.pgairport.ca
Hub Status	International
Distance from Community	451 kilometres
Hours of Operation	24 hours, 7 days/week
Customs Point of Entry	Yes
Foreign Trade Zone	No
Full Instrumentation	Yes
No. of Runways	3
Runway Length	3,490 metres; 1,714 metres; 1,149 metres
Carriers	Air Canada Jazz , Central Mountain Air, Hawkair, Northern Thunderbird Air, West Jet
Weekly Non-Stop Flights (Average)	106/week

Edmonton International Airport	www.flyeia.com
Hub Status	International
Distance from Taylor	670 kilometres
Hours of Operation	24 hours, 7 days/week
Customs Point of Entry	Yes
Foreign Trade Zone	Yes
Full Instrumentation	Yes
No. of Runways	2
Runway Length	3,352 metres; 3,109 metres
No. of Weekly Non-Stop Flights (Average)	122/week

Vancouver International Airport	www.yvr.ca
Hub Status	International
Distance from Community	1,217 kilometres
Hours of Operation	24 hours, 7 days/week
Customs Point of Entry	Yes
Foreign Trade Zone	Yes
Full Instrumentation	Yes
No. of Runways	3 plus water runway
Runway Length	3,030 metres; 3,505 metres; 2,225 metres
No. of Weekly Non-Stop Flights (Average)	
▪ Asia	111/week
▪ Europe	47/week
▪ United States	471/week

Data Source: Northern Development Research – www.northerndevelopment.bc.ca



PORTS

PORT OF PRINCE RUPERT

Port of Prince Rupert	www.rupertport.com
Distance from Fort St. John	1,155 kilometres
Location of Port	Prince Rupert
Terminals	Fairview (Container) Terminal, Ridley Terminals, (coal, wood pellets), Prince Rupert Grain, Northland Cruise Terminal
Type of Port	Ocean
Channel Depth	35-55 meters
Shallow Water Barging Facilities	Yes
Deep Water Barging Facilities	Yes
General Cargo Facilities	Yes
Containerized Facilities	Yes
Refrigerated Container Facilities	Yes
Cruise Ship Facilities	Yes
Storage Facilities	Yes
Highway Serving Port	#16
Railway Serving Port	CN Rail
Types of Services:	Metallurgical/Thermal Cole, Petroleum Coke, Wood Pellets, Sulfur, Grain, Logs
Imports	Retail (including electronics, apparel, furniture, auto parts); petroleum products; industrial inputs (tiles, glass)
Exports	Midwest – specialty crops; scrap metal, recycled paper British Columbia – Forest products (lumber, pulp, logs); aluminum, seafood
Shipping Lines	G.W. Nickerson, LBH, Northcoast Shipping Inc., Rupert Marine, TNC Agencies Canada Ltd, Pacific NorthWest Ship & Cargo Services



PORT OF KITIMAT

Private Port of Kitimat	www.kitimat.ca/EN/main/business/invest-in-kitimat/port-of-kitimat.html
Distance from Fort St. John	1,070 kilometres
Terminals	Rio Tinto Alcan - Break Bulk Terminal Eurocan Breakbulk Terminal Methanex Petrochemical Terminal
Type of Port	Deep Sea
Channel Depth	100 - 300 fathoms (190 – 570 metres)
Turning Basin	1 - 3 nautical miles (1.852 – 5.556 metres)
Shallow Water Barging Facilities	Yes
Deep Water Barging Facilities	Yes
General Cargo Facilities	Yes
Containerized Facilities	No
Storage Facilities	Yes
Highway Serving Port	Highway # 16 via #37
Railway Serving Port	CN Rail
Types of Services	Bulk/ Break-bulk, Pitch, Alumina , Bauxite Condensate, Green and Petroleum Coke, Methanol, Sackkraft, Linerboard, Pulp, Wood Chips, Fluoride and Aluminum Lingots
Imports	Pitch, Alumina, Bauxite Condensate, Methanol
Exports	Kraft Paper, Aluminum Sheeting
Shipping Agents	Gateway Shipping and Transport, GW Nickerson Co., Kitimat Shipping Agencies, TNC Canada
Tug and Barge	SMIT Marine, Seaspac International



CUSTOM POINT OF ENTRY

Canadian Border Services Agency**Prince George****Type of Entry Point**

Airport

Location4141 Airport Road
Prince George, BC V2N 4M6
Tel: 250.963.2400

Canadian Border Services Agency**Vancouver****Type of Entry Point**

Airport

LocationBox 23750, 3211 Grant McConachie Way
Richmond, BC V7B 1Y7
Tel: 604.207.7077

Canadian Border Services Agency**Prince Rupert****Type of Entry Point**

Port

Location368 - 309 2nd Avenue West
Prince Rupert, BC V8J 3T1
Tel: 250.627.3003

Canadian Border Services Agency**Kitimat****Type of Entry Point**

Port

Location309 - 450 City Centre
Kitimat, BC V8C 1T6
Tel: 250.627.3003

Data Source: Canada Border Services Agency - <http://cbsa-asfc.gc.ca/do-rb/menu-eng.html>



PORT SHIPPING DISTANCES

The Northwest Transportation and Trade Corridor ports (Kitimat and Prince Rupert, Stewart) are between 1 and 1 1/2 day closer to general Asia Pacific markets than the Ports in British Columbia's lower mainland; and the Vancouver Ports. The Southern Ports are closer to the Panama Canal and subsequently, the Atlantic. The following table is in nautical miles. The Time/Speed/Distance Calculations are at 16.1439 Kn/Hr., the average speed The Port of Vancouver uses for calculating their shipping to Yokohama, Hong Kong, Kaohsiung (Taiwan) and Xingang (China). Deep-sea vessels travel at various speeds between 14 knots/hr and 20 knots/hr. The 'great circle shipping route' to Asia from North America has well documented ocean currents and weather/wind patterns which allows for accurate estimates.

	Kitimat	Prince Rupert	Stewart	Vancouver	Los Angeles	Yokohama (Japan)	Hong Kong	Kaohsiung Kang (Taiwan)	Xingang (China)
Kitimat	-- 7.5 Hrs	121 NM 7.5 Hrs	264 NM 17 Hrs	400 NM 1 Day	1,391 NM 3.5 Days	3,941 NM 10 Days	5,444 NM 14 Days	6,,187 NM 16 Days	6,187 NM 16 Days
Prince Rupert	121 NM 7.5 Hrs	-- 7.5 Hrs	123 NM 10 Hrs	477 NM 1.2 Days	1,432NM 3.6 Days	3,810 NM 9.8 Days	5,323 NM 13.7 Days	6,110 NM 15.7 Days	6,110NM 15.7 Days
Stewart	264 NM 17 Hrs	123 NM 10 Hrs	-- 10 Hrs	573 NM 1.5 Days	1,529 NM 4 Days	3,896 NM 10.3 Days	5,406 NM 14.1 Days	5,155 NM 13.4 Days	4,749 NM 12.5 Days
Vancouver	400 NM 10 Day	477 NM 1.2 Days	573 NM 1.5 Days	-- 1.5 Days	991 NM 2.5 Days	4,262 NM 11 Days	5,763 NM 15 Days	6,587 NM 17 Days	7,578 NM 20 Days
Los Angeles	1,391 NM 3.5 Days	1,432 NM 3.6 Days	1,529 NM 4 Days	991 NM 2.5 Days	-- 2.5 Days	4,839 NM 12.5 Days	6,380 NM 18 Days	7,578 NM 20 Days	8,959 NM 23 Days
Yokohama	3,941 NM 10 Days	3,810 NM 9.8 Days	3,896 NM 10.3 Days	4,262 NM 11 Days	4,839 NM 12.5 Days	-- 12.5 Days	1,585 NM 4 Days	1,335 NM 3.4 Days	1,335 NM 3.4 Days
Hong Kong	5,444 NM 14 Days	5,323 NM 13.7 Days	5,406 NM 14.1 Days	5,763 NM 15 Days	6,380 NM 18 Days	1,585 NM 4 Days	-- 4 Days	290 NM 18 Hrs	290 NM 18 Hrs
Kaohsiung Kang	6,187 NM 16 Days	6,587 NM 17 Days	5,155 NM 13.4 Days	6,587 NM 17 Days	7,578 NM 20 Days	1,335 NM 3.4 Days	290 NM 18 Hrs	-- 18 Hrs	227 NM 14 Hrs
Xingang	6,187 NM 16 Days	6,587 NM 17 Days	4,749 NM 12.5 Days	7,578 NM 20 Days	8,959 NM 23 Days	1,335 NM 3.4 Days	290 NM 18 Hrs	227 NM 14 Hrs	-- 14 Hrs

Source: United States Government. "Distances Between Ports" Prepared and published by the National Imagery and Mapping Agency, Bethesda, Maryland. Ninth Edition 1997.*Time/Speed/Distance Calculations at 16.1439 Kn/Hr., the average speed Vancouver Port lists to reach Yokohama, Hong Kong, Kaohsiung (Taiwan) and Xingang (China)

6. INDUSTRIAL & COMMERCIAL LAND USE

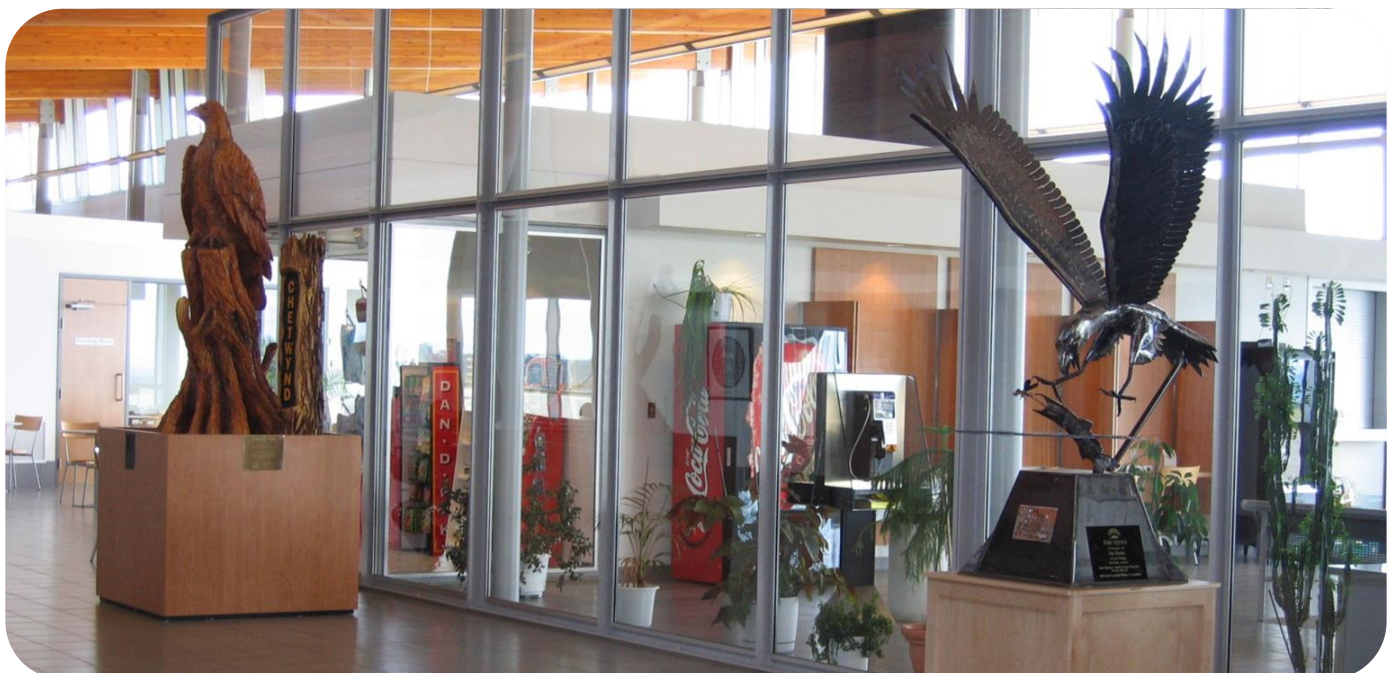
LAND ZONED AND DESIGNATED IN OFFICIAL COMMUNITY PLAN

	Industrial Land	Commercial Land
Total	434 hectares	860 hectares
Hectares Developed	299.2 hectares	794.90 hectares
Hectares Vacant	134.8 hectares	65.1 hectares

VACANT LAND ZONED AND DESIGNATED IN OFFICIAL COMMUNITY PLAN

Industrial Parks	Number
Total Number of Industrial Parks	4 (includes some serviced commercial lands)
Total Hectares	220 hectares
Hectares in use in Use	141 hectares
Hectares Vacant	79 hectares
Hectares Fully Serviced	All land in 3 of the industrial parks is serviced
Vacant Hectares Partially Serviced	N/A
Hectares Not Serviced	Minimal

Data Source: City of Fort St John – www.fortstjohn.ca



LOCAL PERMIT APPROVALS

Type of Permit	Average Time for Approval	Associate Fees
Building Permit	30 days	\$5 per \$1,000 of construction value (maximum of \$500,000)
Business License	5 to 10 business days, pending inspections	\$250 to \$2,000 per year
Development Permit	3-6 months	New construction \$1500 Other \$100-\$750
Occupancy Permit	Same day if final inspections complete	-
OCP/Zoning Amendment	3 months	\$1,500 plus advertising
Re-Zoning Application	3 months	\$1,000 plus advertising
Subdivision Application	Varies	\$500 + \$100 per lot per unit (3 lots or less) \$500 + 200 per lot per unit (4 lots of more)

Data Source: City of Fort St John- www.fortstjohn.ca

ACQUISITION OF CROWN LAND

- Crown land is land that is owned by the Province of British Columbia. The Province is the steward of the land and can lease, license and sell crown land for a variety of purposes including residential, commercial, industrial, agricultural, tourism and recreational purposes.

Government Ministry	Contact	Notes
Ministry Forests, Lands and Natural Resource Operations	FrontCounter BC Website: http://www.frontcounterbc.gov.bc.ca/index.htm Email: FrontCounterBC@gov.bc.ca BC toll free: 1-877-855-3222 Outside North America: 1-778-372-0729	Natural resource client information and authorizations needed to start or expand a business.
Ministry of Agriculture and Lands	Integrated Land and Resource Registry (ILRR) Website: https://a100.gov.bc.ca/apps/ilrr/html/ILRRWelcome.html Email: ILRR@geobc.gov.bc.ca Victoria Help Desk: 1-250-952-6801 BC toll free: 1-866-952-6801	Register of legal interests, rights, designations, and administrative boundaries on Crown Land.
Public Works and Government Services Canada	Real Estate Online Website: http://id-reo.tpsgc-pwgsc.gc.ca/public/ffchrdspl.do?page=acclhm	Showcase of federal real estate available for sale to the general public.



7. UTILITIES

WATER SYSTEM

The Fort St. John Water System has been proactive in providing safe drinking water to its users by practices such as regular bacteriological and chemical sampling, an active flushing program, onsite water quality tests and water system security systems.

The Fort St. John Water System has five wells; three wells are used daily, with the other wells being used to supplement as needed. These are shallow wells which are sealed and covered. They are located five kilometres upstream of the Peace River Bridge and beside the new railway bridge in Taylor.

There is a new Rural Water Dispensing Station that has been designed for quicker delivery of water and ease of access for all vehicles. It is located on the West Bypass Road with six bays for large trucks and two bays for small vehicles. There are four bays for top load trucks with over four metre of clearance, plus two bays with hose outlets at the 1.2 metres height for other vehicles. All six of these bays have 3" (75mm) male cam-lock outlets. Trucks are required to have a 3" (75mm) female cam-lock fitting plus adequate hose attached to reach their tank. Once connected to the outlet the driver will then activate the system simple by entering an operator number and pin they have been assigned, enter the bay number they are filling from and then the number of liters required. To start the flow of water the driver then pushes and holds then up arrow on the hanging pendant switch to open the valve.

WATER PRODUCTION

Name of Provider	City of Fort St. John
Rated Capacity	180 litres / second
Average Daily Demand	10,000 cubic meters per day
Peak Demand	15,500 cubic meters per day
Residential Cost	\$0.75 / cubic metre
Industrial Cost	\$0.75 / cubic metre
Water Connection Fee: Industrial	Based on size of service

Data Source: City of Fort St John- www.fortstjohn.ca



WASTE WATER SYSTEM

The City of Fort St. John collects raw sewage from all lots within the City boundary and conveys the flows through pipes to one of two treatment locations – the North Lagoons and the South Lagoons. Discharge from the North Lagoons is into the Beatton River during spring and fall only. Discharge from the South Lagoons is into the Peace River. Discharge from the North and South Lagoons is governed by the Ministry of Environmental Operational Certificate ME-17748 which supersedes any previous permits.

SEWAGE SERVICE

Name of Provider	City of Fort St. John
Rated Capacity	20,000 cubic metres /day
Average Daily Demand	8,000 cubic metres / day
Peak Demand	16,000 cubic metres /day
Residential Sewer per cubic meter (1000 litres)	\$1.49 (based on water consumption data)
Residential Sewer flat rate	\$12.00/month
Sewer Connection Fee for Industrial Users	Based on service size

LANDFILL AND WASTE MANAGEMENT

Landfill Name	Location	Hours of Operation	Capacity Left at Current Site
Eco-Depot Recycling Centre	10115-94 Avenue Fort St. John, BC Tel: 250.785.0300	7 days a week 8:00am-5:00pm	
North Peace Regional Landfill	7014, 269 Road Fort St. John, BC Tel: 250.785.1067	Monday to Saturday 9:00am-5:45pm	35 years

LICENSED HAZARDOUS MATERIALS DISPOSAL

Name of Site	CCS
No. of Licensed Hazardous Waste Haulers Serving the Area	3

Data Source: City of Fort St John- www.fortstjohn.ca



ELECTRIC POWER

Provider: BC Hydro	www.bchydro.com
Enquiries to Hook Up New Property	1.877.520.1355
Enquiries About Existing Properties Already Hooked Up	1.800.224.9376
Net Importer/Exporter of Power:	Net Exporter – BC Hydro generates between 43,000 and 54,000 GWH of electricity annually.
% of Reserve Margin Including Generation and Net Purchases	8% as per WSCC guidelines plus an additional 8% surplus
Average Electrical Service Availability Index	
▪ Most Recent Year	99.974
▪ Last 5 Years	99.967
Name of Power Pool Membership	Formal membership in WSCC, WSPP, Power Pool of Alberta (PPA), MAPP. Also active in SPP and CalPX
Source Electric Power Deregulated	Wholesale competition allowed
Residential Customers	\$0.0797 per kWh for the first 1,350 kWh use over a two-month billing period. Additionally, customers pay \$0.1195 per kWh for the balance of the electricity used during the billing period and a basic service charge of \$0.1764 per day.
Business Customers	Average Cost Per kWh
Small General Service Rate	<i>Annual peak demand less than 35kW</i>
▪ Basic Charge	\$0.2257 per day
▪ All kWh	\$0.1073 per kWh
▪ Minimum Charge	\$0.2257 per day (equal to the Basic Charge)
▪ Discounts	1.5% on entire bill if customer’s electricity is metered at primary potential \$0.25 per kW if customer supplies transformation from a primary to a secondary potential If a customer is entitled to both discounts the 1.5% discount is applied first
▪ Rate Rider	5% Rate Rider applied to all charges, before taxes and levies
Medium General Service Conservation Rate	<i>Annual peak demand between 35 and 150 kW</i>
▪ Basic Charge	\$0.2257 per day
▪ Demand Charge	\$0.00 per kW for first 35 kW \$5.50 per kW for next 115 kW \$10.55 per kW for remaining kW
▪ Energy Charge	Part 1: \$0.0989 per kWh for last 14,800 kWh

	<p>\$0.0690 per kWh for remaining kWh up to baseline</p> <p>Part 2:</p> <p>\$0.0990 per kWh for usage up to 20% above baseline</p> <p>\$0.0990 per kWh for savings down to 20% below baseline (credit)</p> <p>Usage or savings beyond 20% of baseline are based on Part 1 prices</p>
<ul style="list-style-type: none"> ▪ Power Factor Surcharge 	Applicable if a customer's power factor is below 90%
<ul style="list-style-type: none"> ▪ Discounts 	<p>1.5% on entire bill if customer's electricity is metered at primary potential</p> <p>\$0.25 per kW if customer supplies transformation from a primary to a secondary potential</p> <p>If a customer is entitled to both discounts the 1.5% discount is applied first.</p>
<ul style="list-style-type: none"> ▪ Minimum Monthly Charge 	Equal to 50% of the highest Demand Charge during the previous Nov 1 to Mar 31 period. The Basic Charge, Minimum Energy Charge, and Demand Charge are replaced by the Minimum Charge if there is less than this amount.
<ul style="list-style-type: none"> ▪ Minimum Energy Charge 	\$0.0330 per kWh applies when the Energy Charge (Part 1 and 2) divided by the total kWh is less than \$0.0330 kWh.
<ul style="list-style-type: none"> ▪ Rate Rider 	5% Rate Rider applied to all charges, before taxes and levies.
Large General Service Conservation Rate	
	<i>Annual peak demands equal to or greater than 150 kW or total annual energy usage of at least 550,000kWh.</i>
<ul style="list-style-type: none"> ▪ Basic Charge 	\$0.2257 per day
<ul style="list-style-type: none"> ▪ Demand Charge 	<p>\$0.00 per kW for first 35 kW</p> <p>\$5.50 per kW for next 115 kW</p> <p>\$10.55 per kW for remaining kW</p>
<ul style="list-style-type: none"> ▪ Energy Charge 	<p>Part 1:</p> <p>\$0.1066 per kWh for first 14,800 kWh</p> <p>\$0.0513 per kWh for remaining kWh up to baseline</p> <p>Part 2:</p> <p>\$0.0990 per kWh for usage up to 20% above baseline</p> <p>\$0.0990 per kWh for savings down to 20% below baseline (credit)</p> <p>Usage or savings beyond 20% of baseline are based on Part 1 prices</p>
<ul style="list-style-type: none"> ▪ Power Factor Surcharge 	Applicable if a customer's power factor is below 90%
<ul style="list-style-type: none"> ▪ Discounts 	1.5% on entire bill if customer's electricity is metered at primary

potential

\$0.25 per kW if customer supplies transformation from a primary to a secondary potential

If a customer is entitled to both discounts the 1.5% discount is applied first

▪ Monthly Minimum Charge	Equal to 50% of the highest Demand Charge during the previous Nov 1 to Mar 31 period. The Basic Charge, Minimum Energy Charge, and Demand Charge are replaced by the Minimum Charge if there is less than this amount.
▪ Minimum Energy Charge	\$0.0330 per kWh applies when the Energy Charge (Part 1 and 2) divided by the total kWh is less than \$0.0330 per kWh
▪ Rate Rider	5% Rate Rider applied to all charges, before taxes and levies
Industrial: Transmission Service	<i>Customers with transmission accounts use large amounts of energy and invest in electrical infrastructure that allows them to receive service at high voltage</i>
▪ Demand Charge	\$7.341 per kVA of billing demand
▪ Energy Charge	\$0.03836 per kWh applied to all kWh up to and including 90% of the customers baseline load (CBL) in each billing year. \$0.08503 per kWh applied to all kWh above 90% of the CBL in each billing year.
▪ Minimum Charge	\$7.341 per kVA of billing demand per billing period
▪ Rate Rider	5% Rate Rider applied to all charges, before taxes and levies.

Data Source: BC Hydro - <https://www.bchydro.com/index.html>

NATURAL GAS

Pacific Northern Gas

www.png.ca

Rate Territory

Fort St. John Service Area

Contact

Tel: 1.800.667.2297 Emergency: 1.800.663.1173

Type of Customer	Basic Monthly Charge (\$/Month)	Delivery and Commodity Charge (\$/GJ)
Residential (RS1)	\$7.00	\$5.631
Small Commercial (RS2)	\$7.00	\$5.066
Large Commercial (RS3)	\$150.00	\$4.557
Small Industrial (RS4)	\$410.00	\$3.559
Commercial Transport (RS23)	\$125.00	\$2.149
Small Industrial Service (RS6)	\$410.00	\$1.2925
Small Industrial Service (RS10)	\$3,095.00	\$0.4371
Small Industrial Service (RS11)	\$3,095.00	\$0.3968

Data Source: Pacific Northern Gas "Rates" – www.png.ca

TELECOMMUNICATIONS

Telus is the primary service provider for the City of Fort St. John. Additional telecommunications service providers are Shaw, Bell, and Rogers.

Name of Provider	Telus
Address	5 - 3777 Kingsway Burnaby, BC V5H 3Z7
Website	www.telus.com
Contact	
<ul style="list-style-type: none"> ▪ Residential ▪ Small Business ▪ Medium and Large Business 	Tel: 250.310.2255 Toll Free: 800.361.3311 Toll Free: 877.710.0404

Service Characteristics of The Office:

▪ Switch Technology	Digital
▪ Fiber Service provided	Yes
▪ 100 Mbps LAN Service Available	Yes
▪ Monitoring- Remotely or On-Site	Yes
▪ ISDN Available	Yes
▪ ADSL Available	Yes
▪ ADSL Available From Switch	Yes
▪ Central Office on Self-Healing Fiber Ring	Yes
▪ Dual Feed from Two Separate Switching Offices	Yes
▪ Multiple Route Diversity	Yes

Data Source: Northern Development Research – www.northerndevelopment.bc.ca



8. BUSINESS SUPPORT SERVICES

Business Support Services	Number of Services
Welding	39
Tool and Die Shop	17
Machine Shop	17
Office Equipment Service & Repair	3
Temporary Employment Services	2

International Support Services	Number of Services
International Courier Services	6
Freight Forwarders	4
Import/Export Brokers	1

Data Source: Trade and Invest British Columbia "Business Support Services" – www.britishcolumbia.ca/invest



9. GOVERNMENT

MUNICIPAL GOVERNMENT

City	Fort St. John
Form (Structure)	Mayor and Council
Number of Elected Officials	7
Mayor	Lori Ackerman
City Manager	Dianne Hunter

REGIONAL DISTRICT

Regional District	Peace River
Form (Structure)	Chair and Board
Number of Elected Officials	12
Chair	Lori Ackerman
Chief Administrative Officer	Chris Cvik

PROVINCIAL

Government of British Columbia	
Form (Structure)	British Parliamentary
Number of Elected Officials	85
How Often Does Legislature Convene	4 sessions per year

PREMIER

Name	Christy Clark
Affiliation	British Columbia Liberal Party
Year Elected	May 2013
Current Term Expiration	4 Years
Allowed to Run for Another Term	Yes
Next Election Date	2017

PROVINCIAL GOVERNMENT REPRESENTATION

Name of Member of Legislative Assembly (MLA)	Pat Pimm
Total Members of Legislative Assembly	85
Electoral District	Peace River North
Party Affiliation	British Columbia Liberal Party

FEDERAL GOVERNMENT REPRESENTATION

Name of Member of Parliament (MP)	Bob Zimmer
Electoral District	Prince George- Peace River
Year Elected	2011
Party Affiliation	Conservative Party of Canada

SENATE OF CANADA

Senator	Richard Neufeld
Senate Committee(s)	Chair – Energy, the Environment and Natural Resources
Year Elected	2008
Party Affiliation	Conservative Party of Canada



10. HOUSING

HOUSING CHARACTERISTICS

Dwelling Type	Number	Percent of Total Dwelling
Single-detached houses	6,115	59.0%
Movable dwelling	1,210	11.7%
Semi-detached houses	555	5.4%
Row houses	805	7.8%
Apartments, duplex	1,670	16.1%
Other single-attached house	5	0.0%
Total private dwellings	10,360	100.0%

Data Source: Stats Canada — 2011 Community Profile - <http://www12.statcan.gc.ca/census-recensement/2011/dp-pd/prof/index.cfm>

AVERAGE HOUSING VALUES

Municipality	Single Family Residential Property (2014)	Change from 2013 (%)	Total Property Tax & Charges (2013)
Fort St. John	\$348,000 CDN	+8.8%	\$3,700 CDN

Data Source: BC Assessment — "Assessment Notices"

<http://www.bcassessment.ca/Pages/AssessmentRollInformation.aspx?SortField=LinkFilenameNoMenu&SortDir=Asc&View=%7b456CE9A2-2526-4FA9-BA79-B03B1EB3842C%7d>



11. TAXATION

CORPORATE INCOME TAX

	Small Business	Manufacturing	Non-Manufacturing
Federal			
▪ Rate	11.0%	15.0%	15.0%
▪ Formula (Sales, Property and Payroll)	n/a	n/a	n/a
▪ Accelerated Depreciated Permitted	Yes	Yes	Yes
Provincial			
▪ Rate	2.5%	11.0%	11.0%
▪ Formula (Sales, Property and Payroll)	Sales and Payroll	Sales and Payroll	Sales and Payroll
▪ Accelerated Depreciated Permitted	No	No	No
Local			
<i>British Columbia has no local taxes</i>			
Total Federal and Provincial Corporate Income Tax	13.5%	26.0%	26.0%

PERSONAL INCOME TAX

	Federal	Provincial	Local
Earned Income	15 – 29%	5.06% – 14.7%	0%
Unearned Income (e.g. Dividends)	0 – 14.55%	0.0% – 3.92%	0%
Capital Gains	7.5 – 14.5 %	2.53% – 7.35%	0%

SALES / USE TAX

	Rate	Notes
Goods and Services Sales Tax	5%	GST on business inputs is fully recoverable
Provincial Sales Tax	7%	PST Retail Sales Tax
Local	0%	BC has no local sales tax
Total (Effective Combined Rate) Business	7%	Net of GST 0% for production machinery and equipment for eligible manufacturers

SALES TAX RATE BY UTILITY

	Yes/No	Rate	Notes
Electric Power	Yes	5%	5% GST is fully recoverable
Natural Gas	Yes	5%	5% GST is fully recoverable subject to 0.4% tax on energy products to raise revenue for the ICE fund
Fuel Oil	Yes	5%	5% GST is fully recoverable subject to 0.4% tax on energy products to raise revenue for the ICE fund
Water	No	0%	-
Sewer	No	0%	-
Hazardous Waste Disposal	Yes	12%	5% GST is fully recoverable

TELEPHONE SUBJECT TO SALES/USE TAX

	Yes/No	Rate	Notes
Local	Yes	5%	5% GST is fully recoverable
Long Distance	Yes	12%	5% GST is fully recoverable

MACHINERY AND EQUIPMENT SUBJECT TO SALES/USE TAX

	Yes/No	Rate	Notes
Production	No	0%	-
Non-Production	Yes	12%	5% GST is fully recoverable
Pollution Control	Yes	12%	5% GST is fully recoverable
Office Equipment & Fixtures	Yes	12%	5% GST is fully recoverable

SALES/USE TAX ON TANGIBLE PROPERTY

	Yes/No	Rate	Notes
Office Building Construction Materials	Yes	12%	5% GST is fully recoverable
Industrial Building Construction Materials	Yes	12%	5% GST is fully recoverable
Manufactures Raw Materials	No	0%	-
Standard Software	Yes	12%	5% GST is fully recoverable
Custom Software	Yes	12%	5% GST is fully recoverable

SALES/USE TAX ON INTANGIBLE PROPERTY

	Yes/No	Rate	Notes
Accounts Receivable	No	0%	-
Capital Stock	No	0%	-
Stock/Bond Transaction Fee	No	0%	-

Data Source: Government of BC - http://www2.gov.bc.ca/assets/gov/topic/BED47DA4EBDBA60A5F28622B8B2E1451/uploads/whats_taxable_whats_not.pdf

PROPERTY TAX – FORT ST. JOHN

Levy	Residential	Utility	Major Industry	Light Industry	Business	Non-Profit	Farm
Municipal	4.9608	40.0000	27.5291	25.1479	13.9573	10.4559	1.4882
School	2.2664	13.6000	5.8000	5.8000	5.8000	3.3000	6.9000
Hospital	0.5984	2.0943	2.0344	2.0344	1.4660	0.5984	0.5984
Regional District	0.8482	2.9687	2.8839	2.8839	2.0781	0.8482	0.8482
Other	0.2820	1.2816	1.2593	0.9242	0.7129	0.2820	0.2820
Total	8.9558	59.9446	39.5067	36.7904	24.0143	15.4845	10.1168

Data Source: Ministry of Community, Sport & Cultural Development – http://www.cscd.gov.bc.ca/lq/infra/tax_rates/tax_rates2015.htm



12. INTERNATIONAL RESOURCES

INVESTMENT AND BUSINESS SUPPORT OFFICES

Fort St John and District Chamber of Commerce

Contact Name	Lilia Hansen, Executive Director
Address	100-9907, 99 Ave Fort St. John, BC V1J 1V1
Phone Number	Tel: 250.785.6037
E-Mail	info@fsjchamber.com

North Peace Economic Development Corporation

Contact Name	Jennifer Moore, Regional Economic Development Officer
Address	9505, 100 Street Fort St. John, BC V1J 4N4
Phone Number	Tel: 250.785.5969
E-Mail	invest@npedc.ca

Community Futures Development Corporation – Peace River Liard

Contact Name	Sue Kenny, General Manager
Address	904 – 102 Avenue Dawson Creek, BC V1G 2B7
Phone Number	Tel: 250.782.8748
E-Mail	skenny@communityfutures.biz

Northern Development Initiative Trust

Contact Name	Dean McKinley, Director, Economic Development
Address	301 – 1268 Fifth Avenue Prince George, BC V2L 3L2
Phone Number	Tel: 250.561.2525
E-Mail	dean@northerndevelopment.bc.ca

Ministry of Jobs, Tourism, and Skills Training – Regional Economic Operations

Contact Name	Tamara Danshin, Regional Manager, Northeast
Address	10600 – 100 th Street, Fort St. John, BC V1J 4L6
Phone Number	Tel: 250.787.3351
E-Mail	tamara.danshin@gov.bc.ca

FINANCIAL INSTITUTIONS

Name of Company	Address	Phone Number	Website
RBC Royal Bank	10312 100 St Fort St John, BC V1J 3Z1	250.787.0681	www.rbcroyalbank.com
BMO Bank of Montreal	10207 100 St Fort St John, BC V1J 3Y8	250.785.8356	www.bmo.com
TD Canada Trust	10155 100 St Fort St. John, BC V1J 3Y6	250.262.5000	www.tdcanadatrust.com
Scotiabank Bank of Nova Scotia	9915 100 St Fort St. John, BC V1J 3Y3	250.262.5150	www.scotiabank.com
CIBC Canadian Imperial Bank of Commerce	9959 100 Ave Fort St John, BC V1J 1Y4	250.785.8101	www.cibc.com
Business Development Bank of Canada	7-10230 100 St Fort St John, BC V1J 3Y9	250.787.0622	www.bdc.ca
North Peace Savings and Credit Union	10344 100 St Fort St. John, BC V1J 3Z1	250.787.0361	www.npscu.ca

Data Source: City of Fort St. John- www.fortstjohn.ca

EMPLOYMENT ASSISTANCE

Name of Company	Address	Phone Number	Website
Employment Connections	#101 9907 - 99 Ave Fort St John, BC V1J 1V1	250.787.0024	www.employmentconnections.bc.ca

Data Source: City of Fort St. john- www.fortstjohn.ca



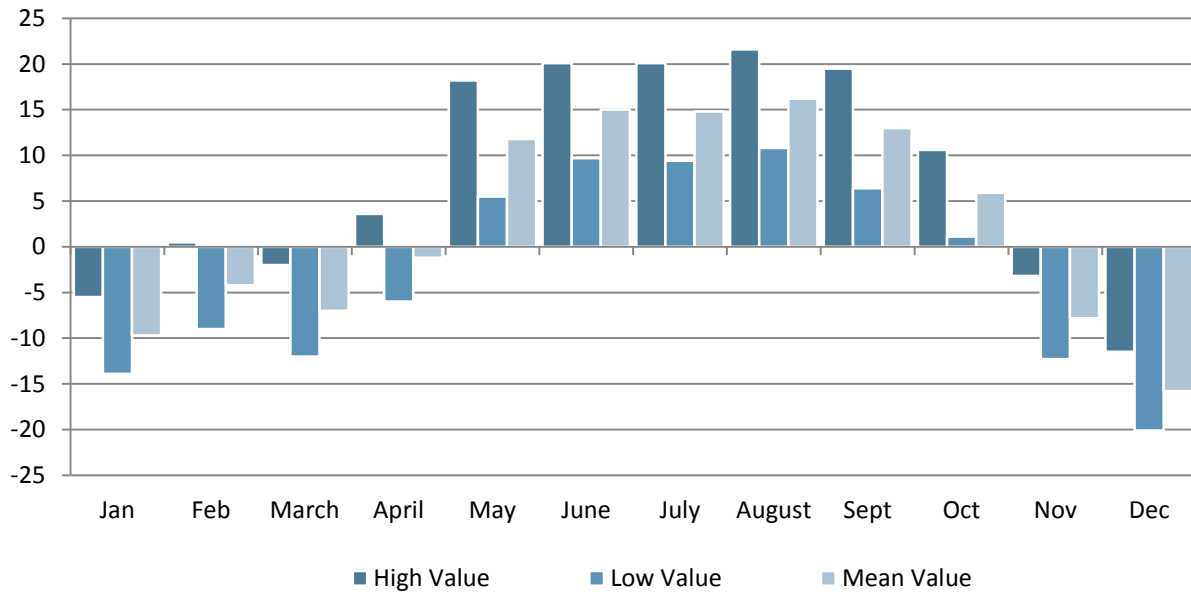
13. QUALITY OF LIFE

CLIMATE

Location: Fort St. John, B.C. Canada
Latitude: 56°15'9"N
Longitude: 120°50'47"W
Elevation: 690 meters



AVERAGE TEMPERATURE IN DEGREES CELSIUS BY MONTH



Data Source: Environment Canada - "National Climate Data And information Archive" – <http://www.climate-charts.com/Countries/Canada.html#BC>

CULTURE

TOP ANNUAL EVENTS

Top Events	Date(s)
International Ice Sculpting Contest- High on Ice	February
Canada Day	July 1 st
Spirit of BC Week	February
Air Show	Every Second Year (2017, 2019, 2021)
Peace River North Festival of Performing Arts	March
Santa Claus Parade	Mid November
North Peace Fall Fair	August
CKNL Trade Show	April

CULTURAL PLACES AND AMENITIES

Amenity	Number
Parks	18
Arts and Culture Clubs	17
Fitness Centres	9
Dance Clubs	7
Dance Companies	2
Theatres	2
Art Galleries	1
Camping Sites	1
Libraries	1
Museums	1



SHOPPING

Amenity	Number
Numerous independent shops in the downtown area	
Number of Enclosed Shopping Malls	2

Data Source: City of Fort St. John – www.fortstjohn.ca

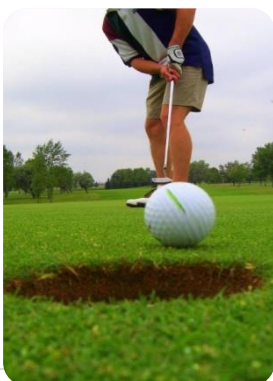
PLACES OF WORSHIP

Amenity	Number
Number of Religious Establishments	21

RECREATIONAL AMENITIES

Amenity	Activity	Location
Beatton Provincial Park, Charlie Lake Provincial Park	Camping, swimming	Charlie Lake
Charlie Lake RV and Leisure	Camping	Charlie Lake
Ross H. Maclean Rotary RV Park	Camping	Charlie Lake
Chetwynd & District Recreation Centre	Swimming, curling, gym, ice arena, squash court, climbing wall	Chetwynd
Alwin Holland Memorial Park, Cameron Lake, Dinosaur Lake, and King Gething	Parks, camping	Dawson Creek
Dawson Creek Golf & Country Club	Golf	Dawson Creek
Kenn Borek Aquatic Centre	Swimming	Dawson Creek
Kiskatinaw Provincial Park	Camping, swimming	Farmington
Farmington Fairways Golf & RV Resort	Golf	Farmington
Centennial Skate Park	Skateboarding park	Fort St. John
College Park Ball Diamonds	Fastball, baseball, softball	Fort St. John
Community Trail System	Outdoor, walking trails, running	Fort St. John
Fish Creek Community Forest	Outdoor, walking trails, running	Fort St. John
Fort Bowling Lanes	Bowling	Fort St. John
Fort St. John Curling Rink	Curling	Fort St. John
Fort St. John Green Gym	Outdoor gym, cardio, strength training	Fort St. John
Fort St. John Links Golf Course	Golf	Fort St. John
Fort St. John Rotary Spray Park	Outdoors, park	Fort St. John
Kids Arena Fieldhouse	Indoor sports hall	Fort St. John
Kin Park	Bike jumps, fastball, softball, playground, tennis courts	Fort St. John
Lakepoint Golf & Country Club	Golf	Fort St. John
North Peace Arena	Hockey, leisure skating, figure skating, gymnastics	Fort St. John

North Peace Leisure Pool	Swimming	Fort St. John
Pomeroy Sport Centre	Hockey, speed skating, leisure skating, walking track	Fort St. John
Rotary Skate Park	Skateboarding	Fort St. John
Rotary Spray Park	Outdoors, park	Fort St. John
Surerus Fields	Slo-pitch/softball, horseshoe pits, tennis courts, soccer fields	Fort St. John
Beattie Park, Bullhead Mountain Train, Butler Ridge, Cameron Lake Outdoor Education Site, Jamieson Woods Nature Preserve	Hiking, walking, trails, education	Hudson's Hope
Bullhead Mountain Curling Club	Curling	Hudson's Hope
Hudson's Hope Arena	Sports, Skating	Hudson's Hope
Hudson's Hope Swimming Pool	Outdoors, swimming	Hudson's Hope
Moberly Lake Provincial Park	Camping	Moberly Lake
Big Bam Ski Hill	Skiing, snowboarding	Taylor
District of Taylor Ice Centre	Hockey, figure skating, leisure skating, playground	Taylor
Lone Wolf Golf Club	Golf	Taylor
Peace Island Park	Camping, boating, swimming, tourism, horseshoe pits, playground, walking trails	Taylor
Taylor Baseball Diamonds	Baseball	Taylor
Taylor Community Hall / Gym	Various types of events, walking club, fitness room, weights	Taylor
Taylor Curling Club	Curling	Taylor
Taylor District Ice Centre	Ice skating	Taylor
Taylor Motorcross Track	BMX/Motor bike races	Taylor
Taylor Speedway	Car racing	Taylor
Taylor Swimming Pool	Swimming	Taylor
Taylor Tennis Club	Tennis	Taylor



HEALTH

HOSPITALS

Hospital	Fort St. John Hospital
Teaching Hospital	Yes
Number of Beds	55 (plus 123-bed residential care facility)
Outpatient Clinic	Yes
Contact	8407, 112 Avenue Fort St. John, BC V1J 2A4 Tel: 250.262.5200

PHYSICIANS AND DENTISTS

Health Providers	Number
Physicians	26
Dentists	11
Ratio Physicians per 1,000	0.99: 1,000
Ratio Dentists per 1,000	0.42: 1,000

Data Source: City of Fort St. John – www.fortstjohn.ca





Jennifer Moore

Regional Economic Development Officer
North Peace Economic Development Commission

9505, 100th Street, Fort St. John BC V1J 4N4
Tel: 250.785.5969 | Email: invest@npedc.ca
www.npedc.ca

Moira Green

Director Strategic Services
City of Fort St. John
10631 - 100th Street, Fort St. John, BC V1J 3Z6
Tel: 250.787.8150 | Email: mgreen@fortstjohn.ca
www.fortstjohn.ca



Northern Development Initiative Trust
Contact for information on financial incentives for manufacturing companies

www.northerndevelopment.bc.ca



TRADE AND INVEST BRITISH COLUMBIA

Trade and Invest British Columbia
Contact for investor site selection and expansion services.

www.britishcolumbia.ca